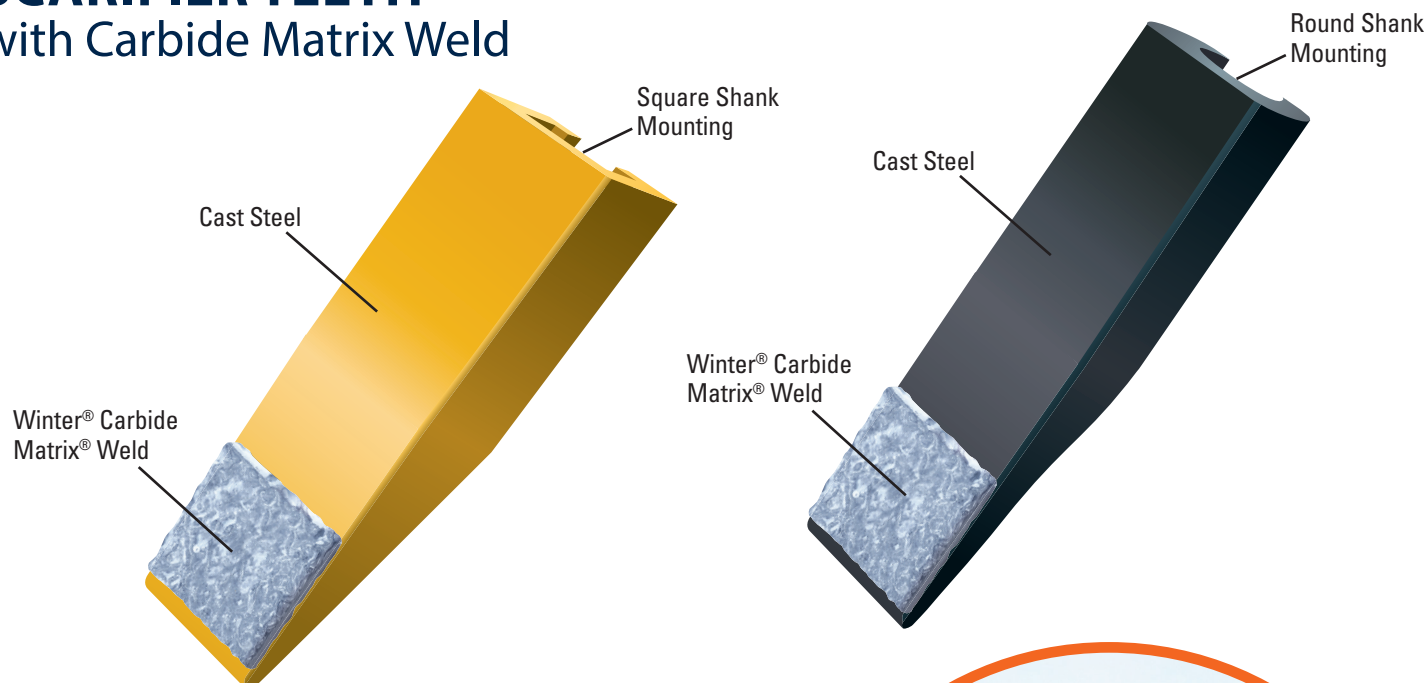


SCARIFIER TEETH

with Carbide Matrix Weld



Scarifier Teeth with Winter® Carbide Matrix® Weld Last 3x Longer.

They have proven to be unbelievably tough in hostile environments with unmatched wear resistance, strength and durability.

With 3x more life than standard cast steel teeth, Winter® scarifier teeth with Winter® Carbide Matrix® weld, reduce your maintenance time and operating cost. Your machine spends more time on the job, and works more efficiently.

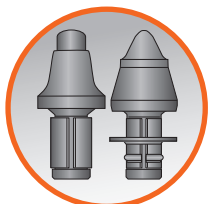
EASY INSTALLATION & REPLACEMENT

- **Cat® Style Tooth** (shown yellow) for square shank application
- **Galion® Style Tooth** (shown black) for round shank application



**Two Models Fit
All Grader Systems**

OTHER HIGH-QUALITY GRADER ACCESSORIES



**MILLING
TOOLS**



**MILLING TOOL
HOLDERS**



HARDWARE

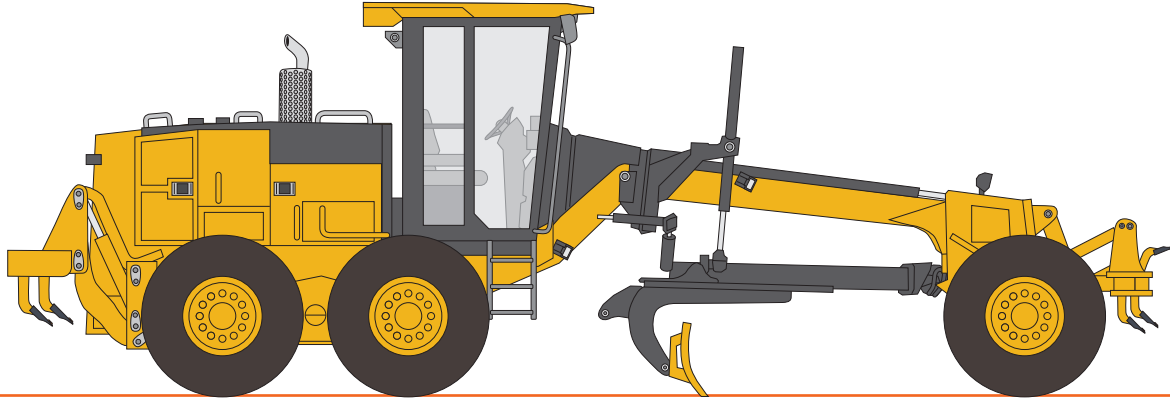


WINTER®
We are cutting edge®

winterequipment.com

800-294-6837

WINTER® STOCKS BOTH CARBIDE MATRIX MODELS AND STANDARD CAST STEEL TEETH.



Both models fit all grader models. All models drive on with no mounting retainer required. They can be used on front mount systems ahead of wheels, middle mount ahead of mold board, and rear of grader.

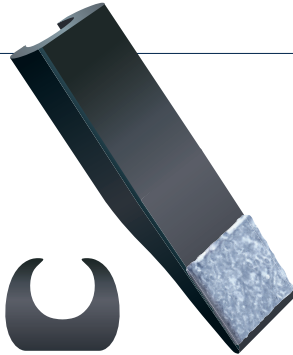
Winter® Scarifier Teeth with Carbide Matrix®

GALION® STYLE

Part Number:
BT-31281CCI

Description:
Carbide Steel with
Carbide Matrix® Weld

Mounting:
Round Shank

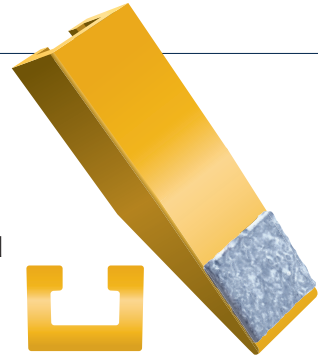


CAT® STYLE

Part Number:
BT-6Y5230CI

Description:
Carbide Steel with
Carbide Matrix® Weld

Mounting:
Square Shank



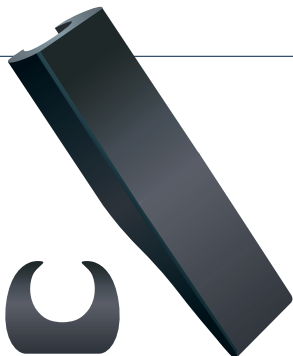
Winter® Standard Scarifier Teeth

GALION® STYLE

Part Number:
BT-31281C

Description:
Cast Steel

Mounting:
Round Shank



CAT® STYLE

Part Number:
BT-6Y5230 (2D5572)

Description:
Cast Steel

Mounting:
Square Shank



Universal Steel Shank

Also Available: Universal Steel Shank to fit all models. **Part Number:** BT-101

Take advantage call us today.
800-294-6837

 **WINTER®**
We are cutting edge®
winterequipment.com